



# CX SERIES

WALK-BEHIND TRENCHERS



Ditch Witch®

# CX SERIES

C 3 0 X / C 2 4 X / C 1 6 X

**THE NEXT EVOLUTION OF THE  
BEST WALK-BEHIND EVER IS HERE.**

Keep your fleet rental-ready with the Ditch Witch® CX Series Walk-Behind Trenchers. Featuring unrivaled maneuverability and traction from our exclusive track design, these machines let you take on tight trenching jobs with ease.

## C 3 0 X

- 31 hp
- 2,100 lb
- 48-in Trench Depth
- 6-in Trench Width
- Electric Start

## C 2 4 X

- 22 hp
- 1,915 lb
- 36-in Trench Depth
- 6-in Trench Width
- Electric Start

## C 1 6 X

- 16 hp
- 1,895 lb
- 36-in Trench Depth
- 6-in Trench Width
- Electric Start



# CX SERIES

C 3 0 X / C 2 4 X / C 1 6 X

Utilizes the Ditch Witch 33K or 35K digging system.

1

Simple, open design allows for quick, easy service access.

2

Redesigned easy-touch controls are smoother and lighter for less operator fatigue and increased machine responsiveness.

3

No daily grease points—a Ditch Witch exclusive—means less prep to keep your trenchers rental-ready.

8

Robust pivot design is maintenance-free and increases uptime.

7

Standard outboard bearing support stabilizes the headshaft and auger for reliable productivity.

6

Exclusive, patent-pending CX Track design puts more track on the ground for better traction and stability.

4

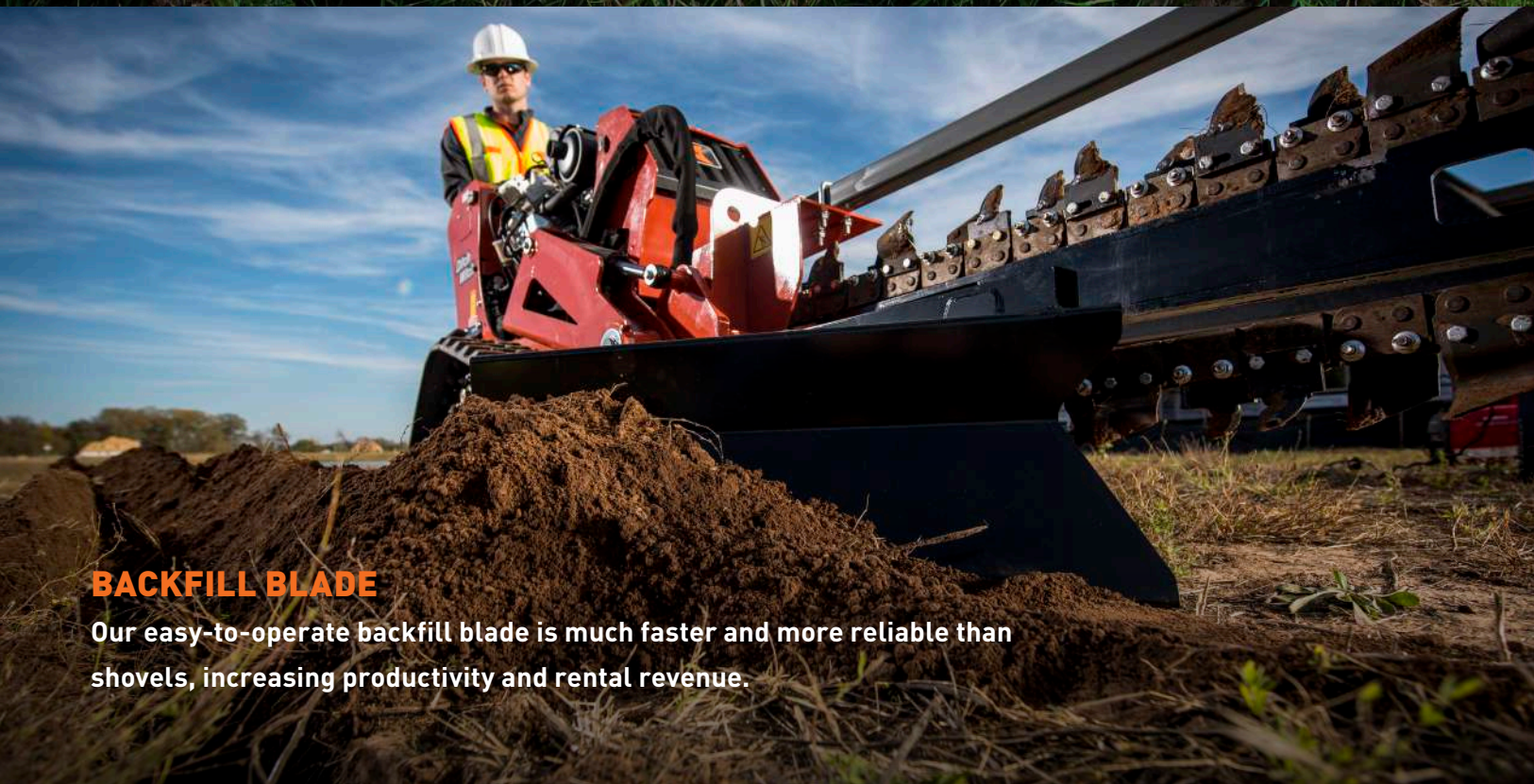
Shorter left track design allows for a narrower profile than the competition for more maneuverability in tight spaces.

5



# OPTIONAL FEATURES

CX SERIES



## BACKFILL BLADE

Our easy-to-operate backfill blade is much faster and more reliable than shovels, increasing productivity and rental revenue.



## ROTO WITCH

The Roto Witch boring attachment results in fewer disturbances, less labor, and less restoration than tearing up driveways and sidewalks to complete an installation.

# CX SERIES WALK-BEHIND TRENCHER SPECIFICATIONS

## DIMENSIONS\*

	C16X	C24X	C30X
Headshaft height	13.7 in (348 mm)	13.7 in (348 mm)	13.7 in (348 mm)
Length (up to)	94 in (2.4 m)	94 in (2.4 m)	101 in (2.6 m)
Width, transport	35.8 in (909 mm)	35.8 in (909 mm)	35.8 in (909 mm)
Height, transport (up to)	63 in (1.6 m)	63 in (1.6 m)	75 in (1.9 m)
Centerline trench to outside edge machine			
Left	17.2 in (437 mm)	17.2 in (437 mm)	17.2 in (437 mm)
Right	18.6 in (472 mm)	18.6 in (472 mm)	18.6 in (472 mm)

## POWER

	C16X	C24X	C30X
Engine	Briggs & Stratton® Vanguard™ 16*	Honda® GX690**	Briggs & Stratton Vanguard 31*
Fuel	Gasoline	Gasoline	Gasoline
Cooling medium	Air	Air	Air
Number of cylinders	2	2	2
Manufacturer's net horsepower rating*	16 hp (11.9 kW)	22 hp (16.5 kW)	31 hp (23.1 kW)
Rated speed	3,600 rpm**	3,600 rpm*	3,600 rpm*
Fuel consumption @ rated power	1.33 gph (5 LPH)	1.77 gph (6.7 LPH)	2.49 gph (9.4 LPH)

## POWER TRAIN

Ground drive transmission: hydraulic, Infinite variable from zero to maximum, speed and direction control			
Digging chain drive: hydraulic direct drive, one speed forward and reverse			
Pump drive: direct drive from engine			
Track width	8 in (200 mm)	8 in (200 mm)	8 in (200 mm)
Hydraulic	Direct drive	Direct drive	Direct drive
Digging chain	33K and 35K	33K and 35K	33K and 35K
Ground pressure	4.5 psi	4.5 psi	5 psi

## OPERATION

Vehicle speeds, max			
Transit forward	120 fpm (36.6 m/min)	176 fpm (53.6 m/min)	176 fpm (53.6 m/min)
Transit reverse	120 fpm (36.6 m/min)	136 fpm (41.5 m/min)	136 fpm (41.5 m/min)
Digging chain speed @ 3,600 rpm			
33/35K	309 fpm (94.2 m/min)	309 fpm (94.2 m/min)	309 fpm (94.2 m/min)
Spoils handling			
Auger, type	Single, open end	Single, open end	Single, open end
Auger, diameter	17 in (432 mm)	17 in (432 mm)	17 in (432 mm)
Trench cleaner type	Mechanical	Mechanical	Mechanical
Trench cleaner size	4-6 in (102-152 mm)	4-6 in (102-152 mm)	4-6 in (100-152 mm)
Operating weight (up to)	1,895 lb (860 kg)	1,915 lb (869 kg)	2,100 lb (453 kg)

## HYDRAULIC SYSTEM @ 3,600 RPM

Chain drive pump flow	10 gpm (37.85 l/min)	10 gpm (37.85 l/min)	13 gpm (49.2 l/min)
Chain drive operating pressure	3,500 psi (241 bar)	3,500 psi (241 bar)	3,500 psi (241 bar)
Ground drive operating pressure	1,800 psi (124 bar)	2,500 psi (172 bar)	2,500 psi (172 bar)
Dual Speed			
Transit	13 gpm (49.2 l/min)	13 gpm (49.2 l/min)	13 gpm (49.2 l/min)
Trenching	3 gpm (11.35 l/min)	3 gpm (11.35 l/min)	3 gpm (11.35 l/min)
Filtration	10 micron absolute	10 micron absolute	10 micron absolute

## FLUID CAPACITIES

Fuel tank	2.3 gal (6.5 L)	6.2 gal (23.5 L)	6.2 gal (23.5 L)
Engine oil	1.5 qt (1.46 L)	1.8 qt (1.7 L)	2.4 qt (2.27 L)
Hydraulic reservoir	2.3 gal (6.5 L)	6.2 gal (23.5 L)	6.2 gal (23.5 L)
Hydraulic system	11 gal (42 L)	11 gal (42 L)	11 gal (42 L)

## TRENCH SIZE, MAX

Depth	36 in (914 mm)	36 in (914 mm)	48 in (1219 mm)
Width	6 in (152 mm)	6 in (152 mm)	6 in (152 mm)

## NOISE LEVEL

Operator ear sound pressure	87 dBA ISO 6394	91 dBA per ISO 6394	93 dBA per ISO 6394
Overall sound pressure	97 dBA per ISO 6393	100 dBA per ISO 6393	103 dBA per ISO 6393

## VIBRATION LEVEL

	Operators hand less than 2.5 m/s <sup>2</sup>	Operators hand less than 2.5 m/s <sup>2</sup>	Operators hand less than 2.5 m/s <sup>2</sup>
--	---	---	---

\* SAE J1940 Gross or Net. \*\* SAE J1349 Net. Specifications are general and subject to change without notice. If exact measurements are required, equipment should be weighed and measured. Due to selected options, delivered equipment may not necessarily match that shown.



## PARTS, ACCESSORIES AND SUPPORT:



### S3C TRAILER

Rugged, innovative and with more customer-driven enhancements than ever, the S3C trailer is custom-built for Ditch Witch® walk-behind trenchers and the VP30 vibratory plow. With a new rail system for easy loading and unloading, a universal mounting kit, and 52% increased capacity over its predecessor, the S3C is the best trailer for the best machines.



### DEALER SERVICE AND SUPPORT

Whether it's new or used equipment, parts, service, financing, or all of the above, your Ditch Witch dealer is prepared to offer you the best of everything. Ditch Witch dealers are chosen for their commitment to the underground construction profession, and they are thoroughly trained to represent the highest standards in the industry.



### GENUINE DITCH WITCH PARTS

Your Ditch Witch dealer is your single source for all of the parts you need, including superior-quality digging systems. Ditch Witch chain, specially manufactured headshaft sprockets and digging teeth are designed to work together as a system to provide unparalleled trenching performance.

